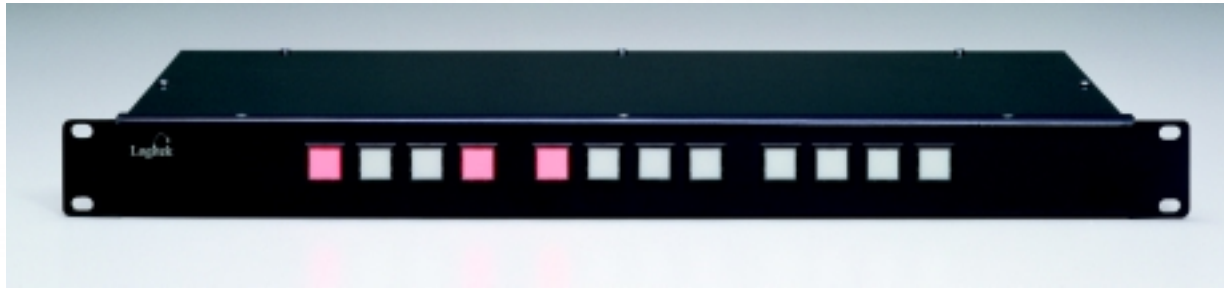


# Button12



The Button12 Router Control Panel lets you extend the power of your Logitek Audio Engine to any room in your facility. Similar to the user definable buttons on the Numix and Remora control surfaces, the Button12 provides 12 programmable pushbuttons that may be used for virtually any purpose: switching record feeds, changing satellite channels, activating status lights, studio - air chain switching, even unlocking the front door.

The Button12 is useful for increasing pushbutton control capabilities in a studio with a Remora or Numix. It also lets you put the power of the Logitek Audio Engine in an equipment room or a studio that has an ordinary console. With its built-in eighteen programmable relay outputs and eighteen pull-to-ground inputs, the Button12 increases the GPI and control relay capacity of your system in the event that the Audio Engine or control surfaces don't fully handle your control I/O needs.

The Button12 may also be used as a twelve input to one output pushbutton router control head, which may be used in applications such as DAT or minidisc record input selection.

The usefulness of the Button12 is enhanced by Supervisor and Command Builder software (now included with the purchase of an Audio Engine) since these programs allow you to create a variety of custom control commands and functions for Audio Engines, Consoles or other devices. With Supervisor / Command Builder, you can create custom or cascading events that are triggered by the press of a single button on the Button12 (or other buttons on Logitek control surfaces).

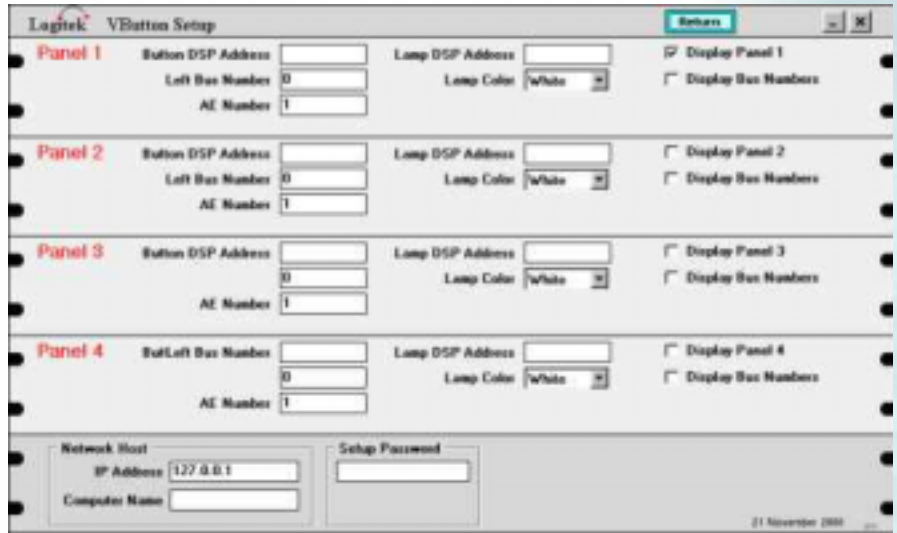
Several Button12 units may be daisy-chained from one Audio Engine port for additional flexibility and functionality.

# vButton

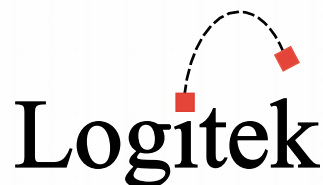
vButton software allows you to control operation functions of the Logitek Audio Engine or any external device attached to the Engine from a PC screen -- without using any rack space. As a computer software implementation of the Button12 panel, vButton gives flexible, programmable function control of many devices with a simple, easy to learn interface on a PC screen. Just click any button on the panel and the function you have set up for that button will occur.

The same labels that display on any Logitek Control Surface appear on the menu display window for each button programmed. The functions attached to each button are easily set up using Command

Builder or AEConfig software. vButton can be configured to control 12, 24, 36, or 48 buttons from one screen with varying functions attached to each of multiple Logitek Audio Engines.



The vButton software is another great interface and control option to expand the functionality of the Logitek Digital Audio system. vButton software is included with Supervisor software for any system purchased after September 2001.



Logitek Electronic Systems 5622 Edgemoor Houston, TX 77081  
713.664.4470 toll-free: 800.231.5870 fax: 713.664.4479  
www.logitekaudio.com