

Route3



The Logitek Route3 brings the routing power of the Logitek Audio Engine to a small, single rack unit controller. Specifically, the Route3 serves as a three channel router selector and controller. You control which audio sources off the Logitek Audio Engine(s) are mapped to three independent outputs of the Route3. For even greater control, up to five Route3 panels can be linked together providing 15 channels of router control from a single Audio Engine control port.

The Route3 has applications throughout your facility. In large production or editing rooms a Route3 could select which input feeds your recording equipment. A single Route3 could serve as the "input selector" for 3 DAT recorders or other recording devices. A Route3 could also serve as a headphone feed selector, allowing three sets of headphones the ability to monitor their own audio feeds. Or use a Route3 to quickly set up a telco or ISDN return feed. A Route3 will be useful anywhere you need to choose from multiple audio sources going to a single destination.

In medium size production rooms, the Route3 shows its versatility by acting as a line selector, or an input expander for your mixing board. If yours is like most studios, your production board never has enough inputs to take care of everything. The installation of a Route3 panel will allow 3 faders on your mixer to share an almost unlimited number of inputs. Just use the Route3 to have any audio source on your Audio Engines routed to your mixer. The best part is the Route3 is compatible with every audio console or mixer ever made.

The Route3 is especially useful in a small studio or edit suite where a console is not really required, but input selection for the recording devices is a necessity. Switch the input to your digital workstation from your microphone to a field recorder to a satellite feed and back all with a single Route3. Since it takes up just a single rack space and installs with a minimal amount of wiring, the Route3 can fit in the smallest of work areas.

The Route3 also helps you grow into your Logitek system. In applications where you are not rebuilding all your studios at once the Route3 plays an important role. Your main control room is being redone with a completely new Logitek installation but the production room is not scheduled for its rebuild until the following year. Installing one or more Route3 panels in the production room will allow all the audio on your Audio

Route3 / vRoute

Engine to be available in the production room as well. Now the powerful routing features of the Logitek Audio Engine will be in all your studios thanks to the Route3.

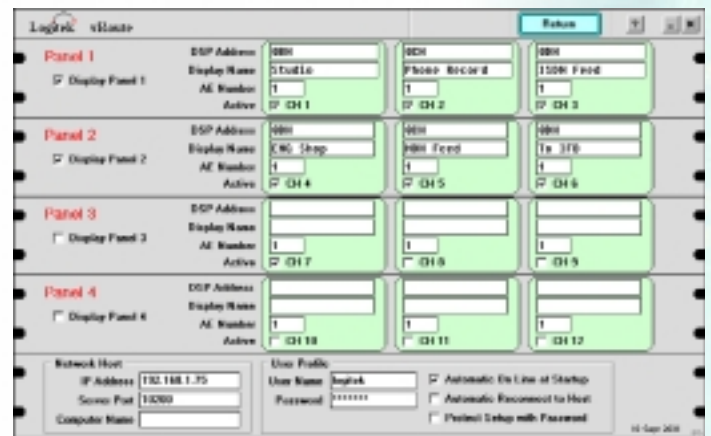
The Route3 also shows up in some unexpected places. A Route3 panel in the engineering room allows the station engineers to effortlessly monitor several audio feeds. A Route3 panel in the Music and Program Directors' offices allows them to monitor on-air feeds or audition music from the automation system by the turn of a dial. Install the Route3 in General Managers' offices to allow them to monitor your various air feeds, or new spots without a mess of bulky equipment or wiring. You can even install Route3 units near receptionists so they can switch between air feeds of your various stations, or tune in special event audio for customers waiting in the lobby.



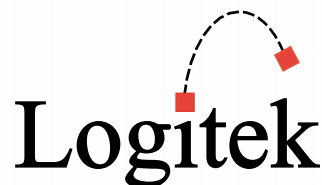
What adds to the Route3's attraction is the ease in which it installs. Just a single CAT-5 cable connects the Route3 to the Logitek Audio Engine. Following that, a trio of audio cables (one for each output of the Route3) connects the Audio Engine to whatever device is receiving the audio signal. Compare that to solutions of the past. These functions were often done with a switch box, a bundle of analog wiring and a distribution amp or two... just to hook up a single 6 input line selector required a bundle of 7 audio cables.

Several Route3 units can be set up to control the same output, running in a mirrored mode. If the engineer changes an ISDN assignment in the equipment room, for example, the change will be immediately visible on a parallel unit installed in the studio.

The Route3 is simple to use with an interactive multi-character LCD screen and clearly labeled controls. The audio channels are displayed in plain, easy to understand text. Simply turn the dial to scroll through the list of available sources, and press a button to make the change. What could be easier?



For even more convenience, we offer vRoute as a software implementation of the Route3. vRoute offers the same features and functionality as the hardware version. Displaying up to 12 router channels on your computer screen, vRoute has a user interface that is simple and straightforward. vRoute is perfect for small digital editing suites, or places that don't require hardware control points. It's included with Supervisor. Call today for complete details on how vRoute and Route3 can benefit your facility.



Logitek Electronic Systems 5622 Edgemoor Houston, TX 77081
713.664.4470 toll-free: 800.231.5870 fax: 713.664.4479
www.logitekaudio.com