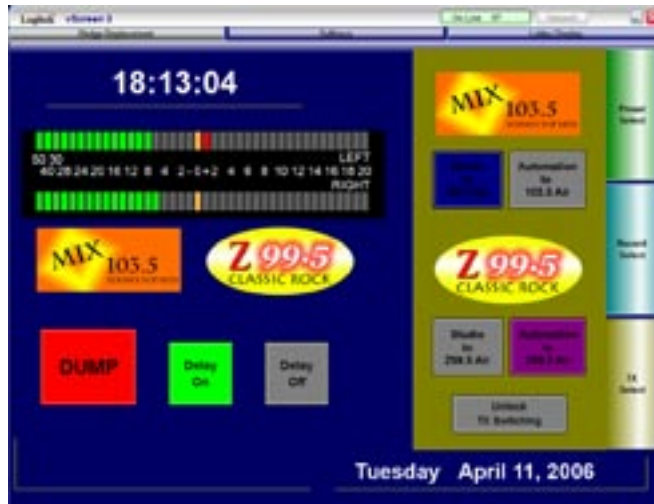


# vScreen Software



Logitek offers a tremendously powerful and comprehensive suite of software tools to complement our Console Router System. Every station has unique operational requirements and with the Logitek software suite of Supervisor, vMix, vRoute and vButton you can customize your installation to fit almost all your unique operating requirements.

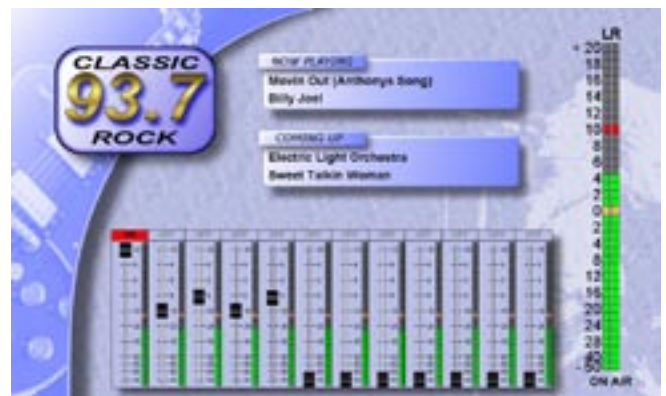
But what about those times when one of our standard applications just doesn't quite fit the bill? Or when you have a need so specific that you wish you had a custom piece of Logitek software written just for you? That's where vScreen comes in.

vScreen is an application that allows you to design your own custom operator interface with your choice of faders, meters, buttons and graphics. Do you want a set of VU meters you can see from across the room? Done. Do you want an emergency control point at your transmitter site? Done. Do you want a simple production set-up for your weekend operators? Done. Do you want a flashy display for that plasma screen in your lobby? Done.

Just Drag and Drop.

The best part of vScreen is its simplicity. It's no more complicated than a child's art program. You start with a blank screen and just drag and drop the elements you want.

vScreen can construct a software meter bridge that shows VU meters for all your on-air signals. Display these meters with each station's logo on a display in your lobby, or show the meters across the top of your monitor so you can see your levels while you sort through e-mail. A vScreen design can be as simple as two buttons - useful on the General Manager's PC to switch audio in the office from one station to another. If you have an unexpected studio guest, you can use vScreen to set up a temporary guest turret with a fader, meter, and on/off/cough buttons.



vScreen Lobby Display Example

vScreen is amazingly easy to use. To set up a custom screen, load the vScreen application and open the Designer page. You'll see selection buttons for Fader, Image, Button, Horizontal Meter, Vertical Meter, Message, Date and Time. Buttons are extremely versatile – they are tied to trigger events on the Audio Engine, which can do anything from a simple contact closure to a full shift changeover with fader re-assignments and new inputs/outputs. (Assistance in creating trigger events is available at nominal cost; contact our Sales department for more information.) Your bitmapped graphics can be imported as images to the screen; messages from your hard disk system can be set up to appear where desired. Even the screen size of the vScreen application can be adjusted so the program can run alongside another Windows application. You have complete control to design a user interface that exactly fits your needs.



vScreen Designer Screen

After you choose an element, just drag it to the desired location on the Designer screen. For example, your designer screen might look something like the screen at the top right. Adjust elements as desired, then save your vScreen layout. Your final display will show the layout elements you chose in the display locations you selected.



vScreen Monitor Display

Set up an entire screen full of meters. Create a custom controller for the Audio Engine router. Give your operators custom panels complete with their photos – there will be no question as to which control panel is “theirs” and it will have all of the buttons and displays they need.

The possibilities are endless with vScreen. Don't settle for a software tool that “mostly works”, get vScreen and get exactly what you want.



Logitek Electronic Systems 5622 Edgemoor Houston, TX 77081  
 713.664.4470 toll-free: 800.231.5870 fax: 713.664.4479  
[www.logitekaudio.com](http://www.logitekaudio.com)